

# ChemPro

SERVICES

UTILITY ROW SERVICES





## Utility ROW Herbicide Services

---



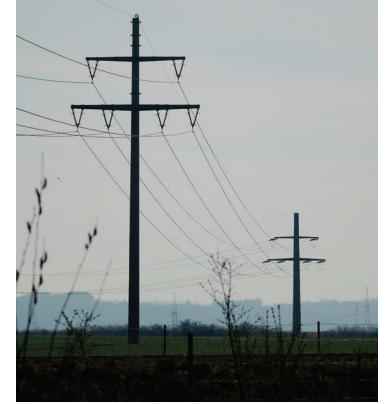
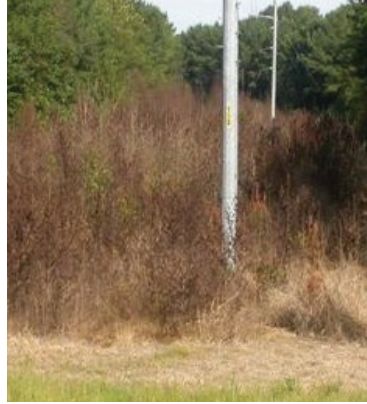
ChemPro Services specializes in Herbicide Services specific to the utility sector. By their nature, utility ROWs transect natural areas, roadways, and private property. These areas require routine maintenance to ensure safe passage and easy access. To meet these goals, one of the most economical maintenance practices is Herbicide Application. Applying herbicides to ROW areas can be done in numerous ways. ChemPro Services offers its services based on what is best for the customer. Variables that determine which method of application is best include:

### Number of Miles or Acres treated...

Many times, utilities have management programs that are dictated by trimming cycles and their corresponding budgets. Projects that encompass large areas and numerous acres may be best served by using a “Low-Volume Labor Crew.” These highly trained crews are made up of laborers who participate in the U. S. Department of Labor’s Guest Worker Program (H2B). The basic objective is for these crews to walk the ROW with backpack sprayers and treat the visible brush species with a higher concentration of herbicide using a smaller target spray pattern, which is ideal where applications need to be made in close proximity. The manpower needed for a specific ROW depends on width and brush density. Drivers (or Foreman) are staged along the ROW with carrier tanks of herbicide solution for optimum efficiency.

### Inconsistent Brush Density...

Some segments of utility ROWs may have been neglected or skipped over on a previous maintenance cycle. This may be due to terrain, access, or omission. These areas require a more targeted approach. It is likely too inefficient to bring in a Low-Volume Crew for these projects. Truck and RTV mounted spray systems—equipped with high-pressure, high-volume spray guns applying a lower concentration of herbicide over a broad area—may be the best solution for these overgrown sectors. Utilities are typically aware of these areas and can tackle a group of such sites with a single project package. This “hot spot” application can be used in conjunction with programmed spray work as an added value to help utilities augment their maintenance cycles. This is a favorite approach among municipally-owned utilities, which may not have large enough systems to use low-volume labor affordably.



## **Public Objection to Foreign Workers...**

Utilities are often subject to public protest concerning their use of foreign guest workers. There is long-standing sentiment, especially in rural areas, for companies to “Buy American and Hire American.” We understand that these issues are difficult for some utilities, especially their members. While we remain neutral on this topic, we are happy to supply American workers on systems or in areas where this is a concern. We also recognize that sometimes the real issue is a language barrier between workers and private land owners/members. ChemPro can resolve this by using English-speaking supervisors to discuss project applications with local patrons as we move crews through ROWs.

## **Population Concentration, Environmental Sensitivity...**

Some areas are deliberately left out of spray programs. This may occur in highly populated areas where residents would object to the “brown out” look of herbicide applications. Another reason may be that certain areas are known for environmentally sensitive species, or that some ROW locations transect protected green space areas. For these ROW sections, we propose a “basal or dormant stem” application. These applications are made in the winter before leafing and do not create a noticeable “brown out” effect. ChemPro Services has a highly trained crew of certified applicators to treat these areas with the sensitivity they require.

## **Vine Abatement, Structural Vegetation Growth Control...**

Certain regions have substantial vine growth on poles and guy wires. This noxious growth causes power outages and can disrupt reliability on circuits that are off current maintenance cycles. ChemPro can design and implement an effective Vine Abatement Program.



## **Tailored for you...**

ChemPro Services is unique in that it can facilitate all client preferences when it comes to crew size, composition, equipment, and program capabilities. Our staff can provide a custom approach that fits your specific ROW needs and challenges.

## Additional Services...

---

- Custom Herbicide Application
- Industrial Weed Control
- Pipeline Vegetation Management
- Roadside Herbicide Program Development
- Invasive Species Eradication
- Land Reclamation / Brush Clearing
- Erosion Repair / Ground Stabilization
- Turf Growth Regulation
- Ditch Bank Maintenance
- Municipal Herbicide Program Development
- IVM Consulting, Mapping, and Planning
- Rotary Cutting / Grounds Maintenance
- Asset Management
- Product Distribution
- Tree Planting and Mitigation Projects

## Customers

- Plants and Various Industrial Sites
- Electrical Cooperatives and Municipal Utilities
- Oil & Gas Producers and Pipelines
- Federal Lands, State Parks, and Military Installations
- State DOTs and County Road Systems
- Ports, Railroads, and Transit Authorities
- Storage Areas, Laydown Yards, and Salvage Facilities
- Municipalities, Cities, Towns, and Districts
- Sustainable energy sites - Solar, Wind, and Hydro



Corporate Address  
ChemPro Services, Inc.  
3311 Gulf Breeze Pkwy. #350  
Gulf Breeze, FL 32563

Office -- 850.677.0278  
Fax -- 866.485.8655

**Sales**  
877.221.9130  
sales@chemproservices.com  
[www.chemproservices.com](http://www.chemproservices.com)

